

Global Imagery Browse Services (GIBS)

The Global Imagery Browse Services (GIBS) system is a core EOSDIS component which provides a scalable, responsive, highly available, and community standards based set of imagery services. These services are designed with the goal of advancing user interactions with EOSDIS' interdisciplinary data through enhanced visual representation and discovery. For a full overview, visit the [GIBS landing page](#). For open source code to the GIBS OnEarth server, MRF tiled imagery storage format, and mapping examples, see the [GIBS GitHub page](#). For detailed information about available imagery products and accessing GIBS, see below.

Information for Users:

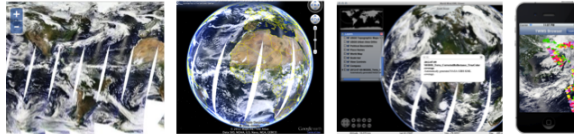
Imagery Products



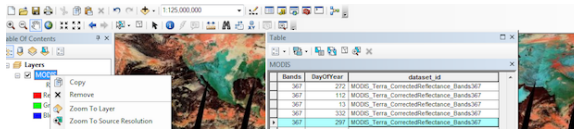
GIBS API for Developers

```
http://map1.vis.earthdata.nasa.gov/wmts-geo/  
http://map1.vis.earthdata.nasa.gov/wmts-arctic/  
http://map1.vis.earthdata.nasa.gov/wmts-antarctic/  
  
.../{Product}/{Time}/{TileMatrixSet}/{TileMatrix}/{TileRow}/{TileCol}.png
```

Map Library and Scripting



GIS Tool Usage



Information for Collaborators:

[GIBS Technical Working Group](#)

Information for Everyone

- [GIBS Blog](#)
- [GIBS Mailing List](#)
- [GIBS Feedback / Support](#)

Information about working with this wiki:

Purpose of the Wiki

This wiki is intended strictly for the use of sharing information about NASA Earth Observing Systems Data and Information System (EOSDIS) topics. For more information please click [here](#) .

We welcome your participation and comments within Earthdata Wiki.

Rules of Conduct

Earthdata Wiki is governed by the general rules of respectful civil discussion. EOSDIS may monitor any user-generated content as it chooses and reserves the right to remove content for any reason whatsoever, without consent. The following rules of conduct are to be followed when using the Earthdata Wiki. Breach of these rules will result in users loses privileges or being banned permanently.

Participation requires a valid Earthdata Login. Only approved NASA users and affiliates will be allowed to upload data. If a wiki space becomes dormant for a period of more than 2 years, EOSDIS reserves the right to delete/remove it.

In order to maintain an environment where everyone is welcome and discussion flows freely, certain types of conduct are prohibited on Earthdata Wiki. Specifically restricted conduct includes trolling, flaming, ranting, personal attacks, harassment, threats, doxing, racism, discrimination, hate speech, sexism, spamming, off-topic posting, pyramid quoting, rumor mongering, impersonation, advertising (including HTML links and pictures), and linking to applications or utilities of uncertain intent.

In addition, the Earthdata Wiki is not for discussion of real-life current affairs, news, politics, or religion. Discussion should revolve around EOSDIS topics. Specific content prohibited on Earthdata Wiki includes pornography, profanity, and real money trading (RMT).

NASA makes no representations or warranties regarding the information posted.