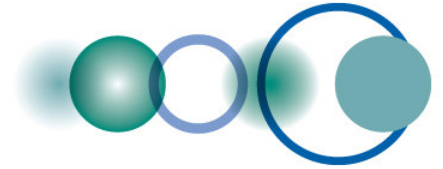


# Q&A: THE GEO STANDARDS AND INTEROPERABILITY FORUM

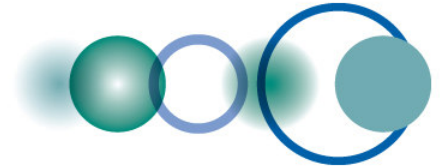
SiriJodha S. Khalsa, *Chair GEO ADC SIF*  
National Snow and Ice Data Center  
Boulder, CO





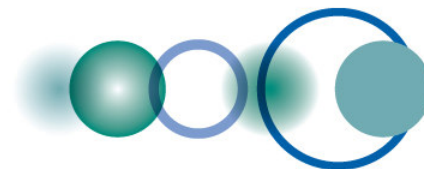
## The SPG Asks:

- What does it mean if a standard shows up in the GEO standards registry?
- How does the SIF work with the regional SIFs?

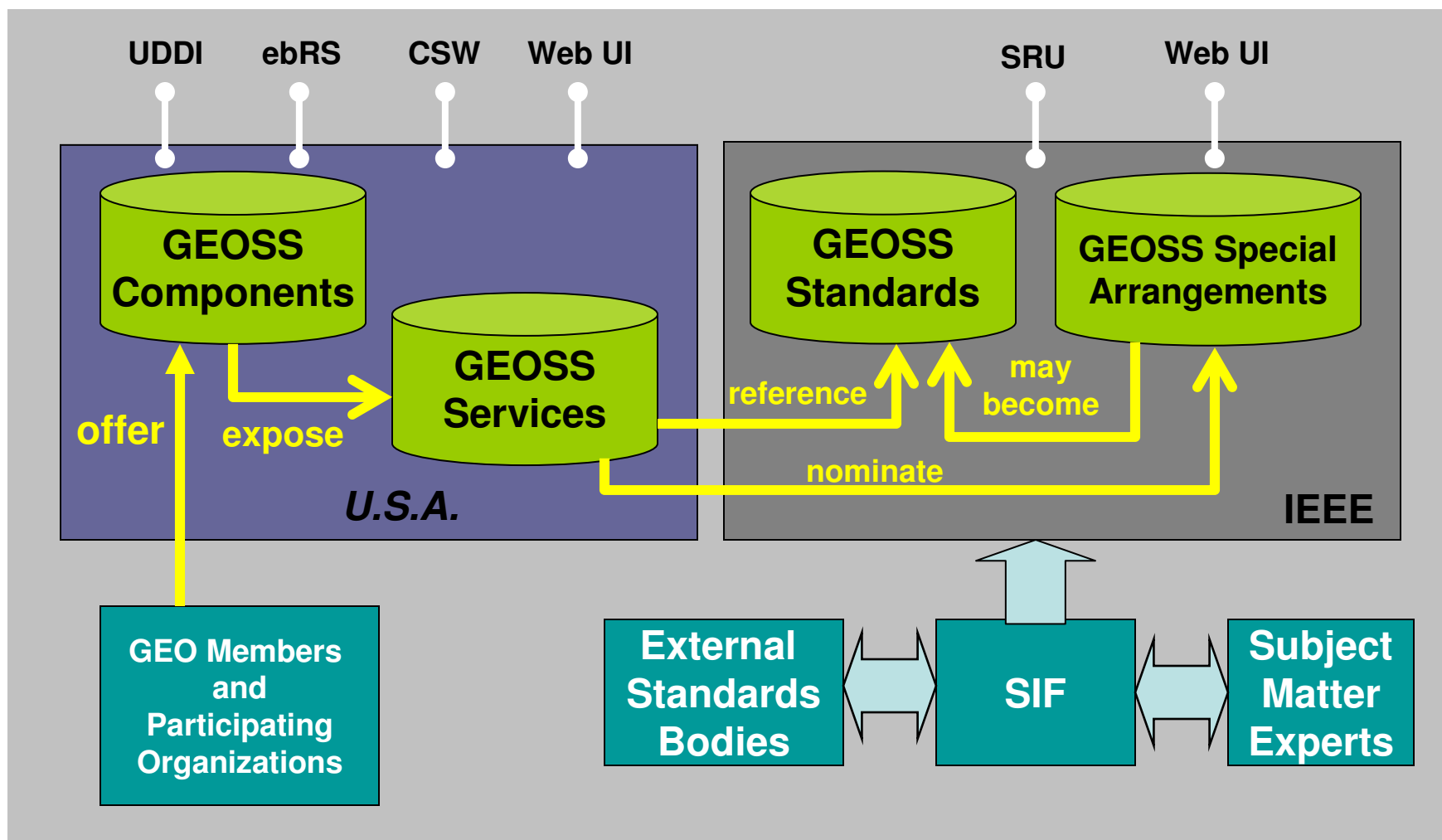


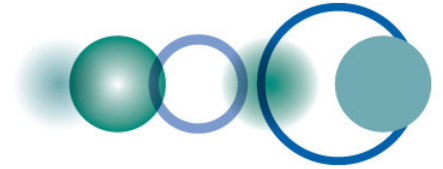
## GEO Components, Services and Standards

- Any GEO Member or Participating Organization may contribute components to GEOSS
  - This is done by registering those components in the GEOSS Components Registry
  - All components are welcome
- If the component exposes services, these are registered in the GEOSS Service Registry
  - When registering services the provider may designate standards employed by that service
  - The list of standards is maintained in the Standards Registry
  - If the “interoperability arrangement” employed by the service is not in the pick-lists, the provider may register a candidate “Special Arrangement”



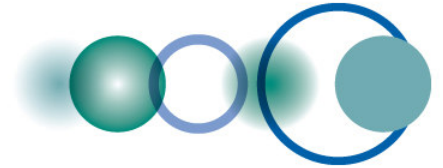
# GEOSS Registries





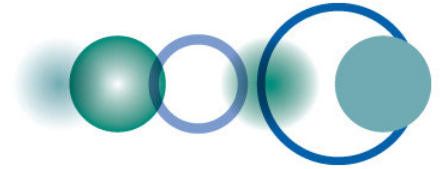
## Process

- How do Standards and Special Arrangements get into the Standards Registry?
  - Prepopulated by SIF
    - Done prior to deployment of Service Registry
    - Included common OGC and ISO/TC211 stds
  - Proposed via Service Registry
    - Associated with a component
  - Proposed at Standards Registry Site
    - User registration required



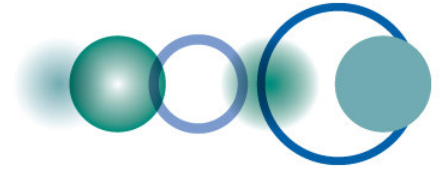
## Issue

- Are all standards in the Registry equal?
  - The SIF must exercise a “light touch” as gatekeeper
  - Preference given to non-proprietary, international standards
  - SIF should foster convergence on limited set of standards to advance goal of interoperability
- Two classes of “Special Arrangement”
  - An international standard not yet in Registry
  - A community or *ad hoc* standard



## Registry Structure (from ISO 19135)

- itemIdentifier
- standardName
- standardTitle
- standardDescription
- standardCreator
- standardPublisher
- standardType
- onLineReference
- uniformResourceName
- public
- status
- dateAccepted
- dateAmended
- contactName
- contactTelephone
- contactEmail
- comments

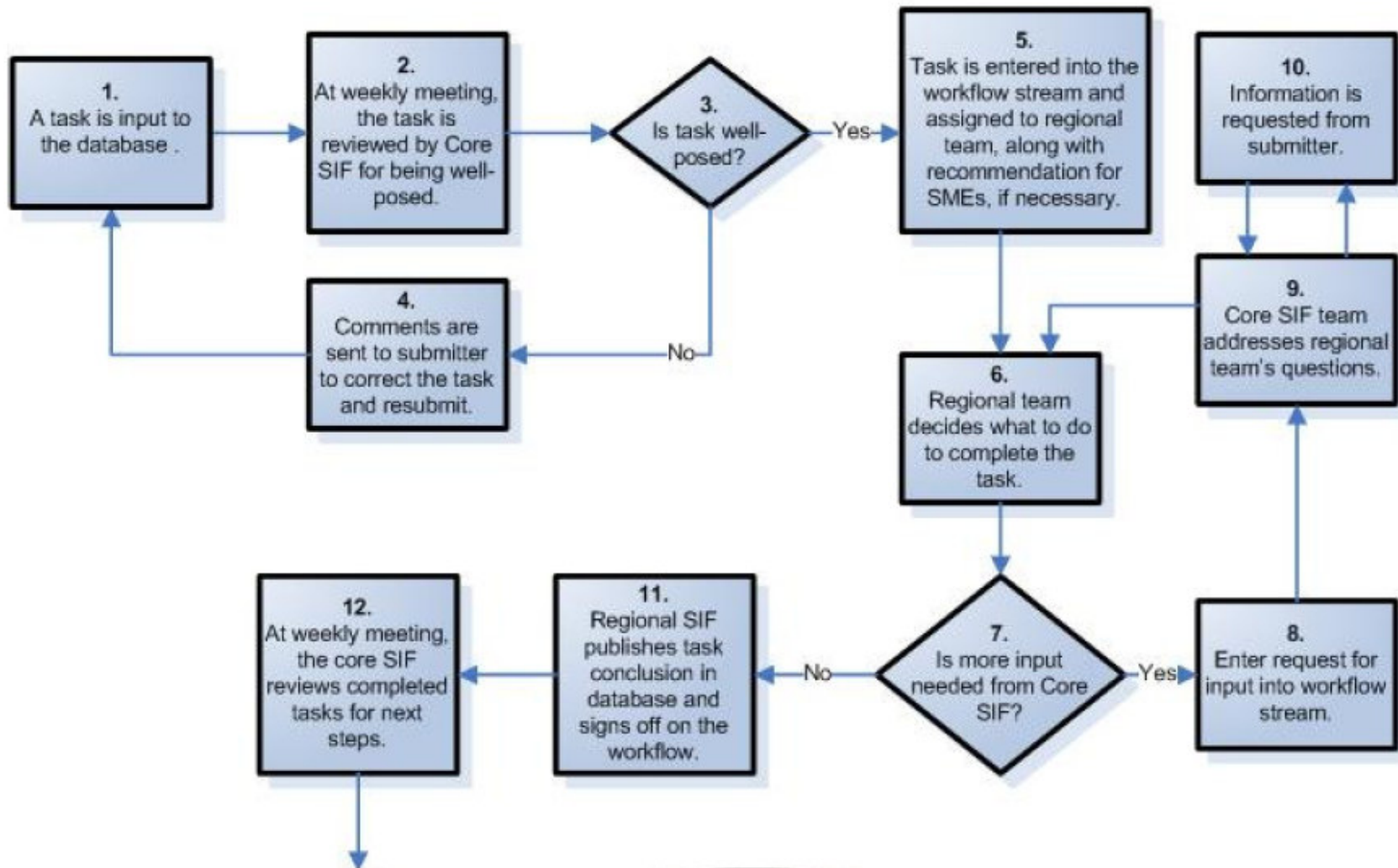


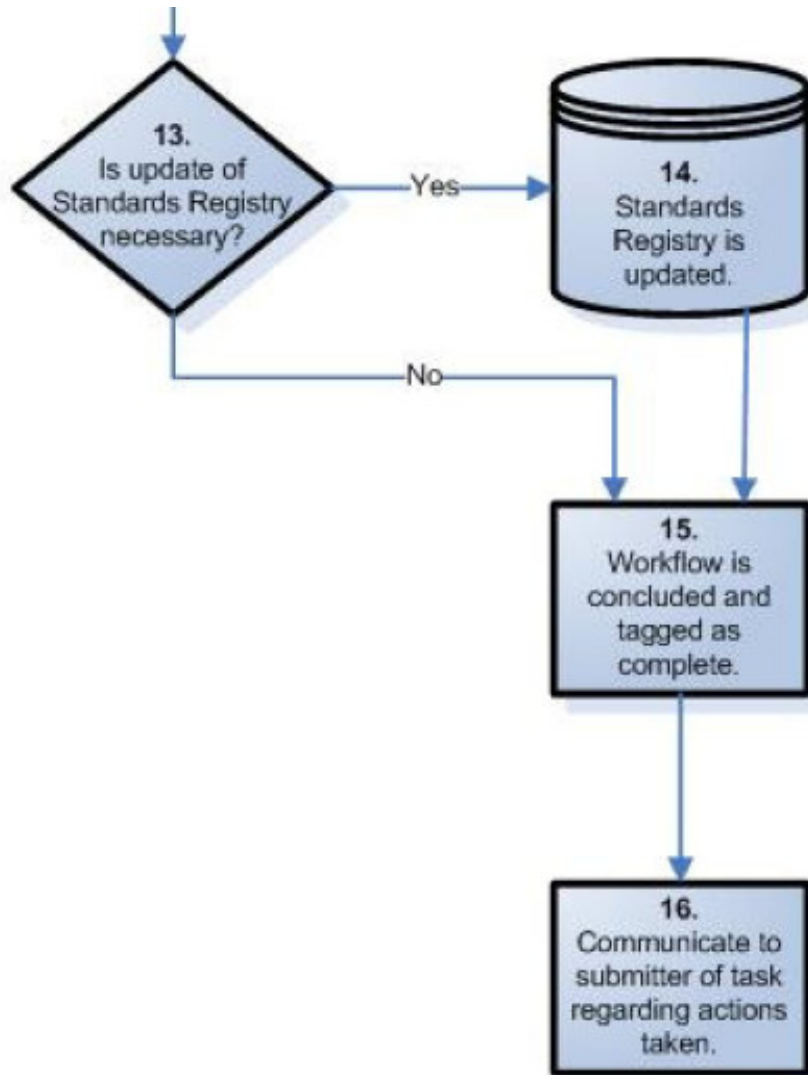
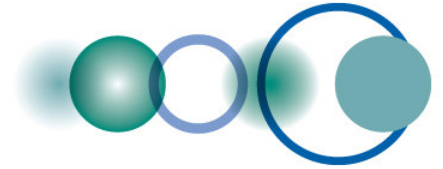
## Registry Structure

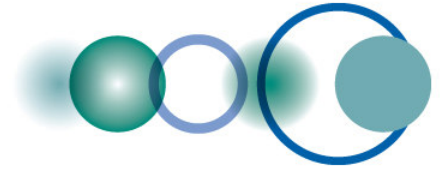
- status can be:
  - ACCEPTED
  - PENDING (proposed)
  - RETIRED (should no longer be used)
  - WITHDRAWN
  - SUPERSEDED (newer version, but still okay to use – we're considering changing label)
- standardType (from standards taxonomy)



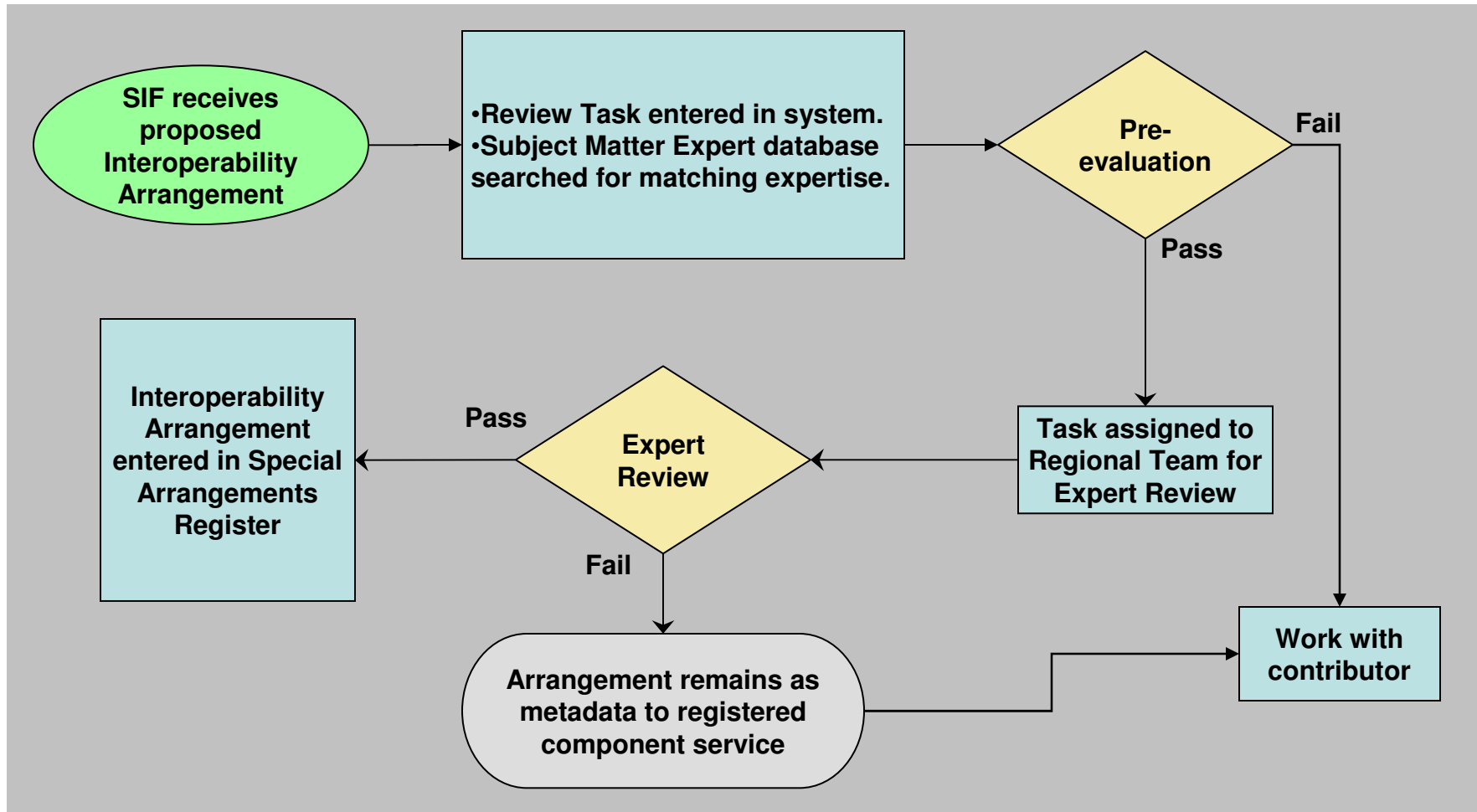
# SIF Task Workflow

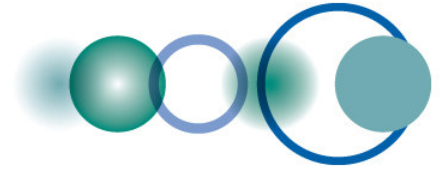






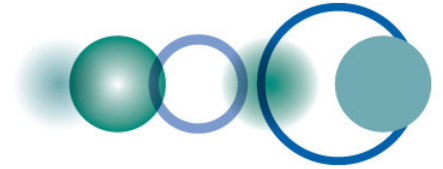
## Standards and Interoperability Forum Process





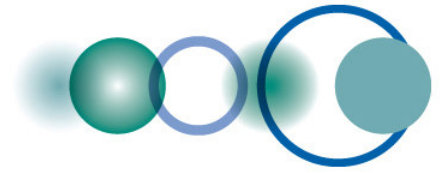
## What does it mean if a standard shows up in the standards registry?

- What kind of vetting/review has taken place?
  - GEO ADC (AR-06-01) selection for pre-populated standards
  - SIF Review otherwise
- Is there proof of at least 2 implementations?
  - No. If coming from Service Registry, there is at least one.
- Is there information on how widely used (or not widely used) the standard is?
  - Advantage of GEOSS Registries is that statistics on number of components that refer to each standard will be available



## How does the SIF work with the regional SIFs?

- The SIF “Regional Teams” are still being formulated
  - EC funded initiative, GIGAS, to coordinate efforts of INSPIRE, GMES and GEOSS
  - Japanese team lead identified
  - South American team lead identified
  - Participants in N. America team have been identified
  - Indian regional team.
  - Suggested that African participants team-up with the European team for the moment, and once their membership gets going, split off at that time.
- Subject matter expert database being developed



# Background



