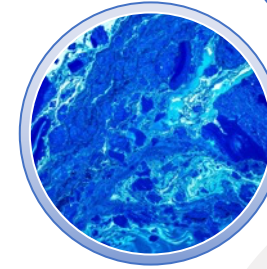


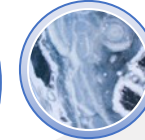


**Radiant Earth
Foundation**
EARTH IMAGERY FOR IMPACT

Open Data



Positive Impact



Innovative
Technologies

Advancing an Open-Access Repository for Earth Observation Training Data and Machine Learning Models

PI: Hamed Alemohammad

Kevin Booth (Co-I)

Geospatial Software Engineer

NASA ACCESS 2019 Kickoff

Oct 29, 2020

- Repository of training datasets
- Open-access
- Cloud-native
- API-based
- STAC



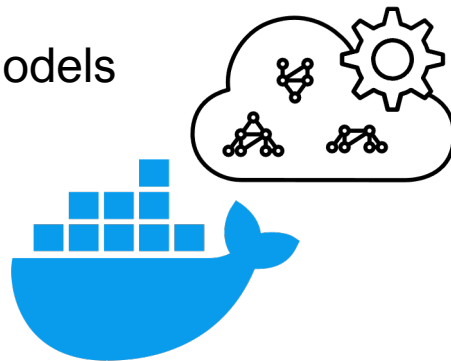
1) Radiant MLHub Python Client

- Wrapper for the API
- Increase usability and data access
- UX Design



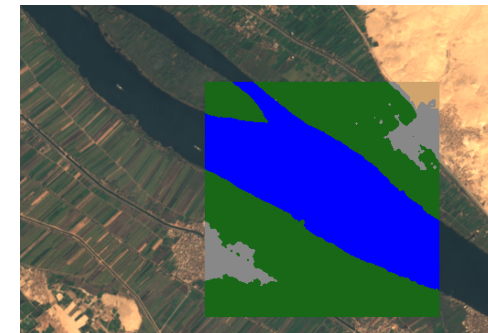
2) ML Model Containerization and Hosting

- Catalog of open ML models
- Metadata standard
- Containerized
- UX Design



3) Expand LandCoverNet

- Multi-satellite LC training data (SAR & EO)
- Global and geographically diverse
- Human consensus
- 600 M labeled pixels



Overall: Enhanced Integration with NASA catalog